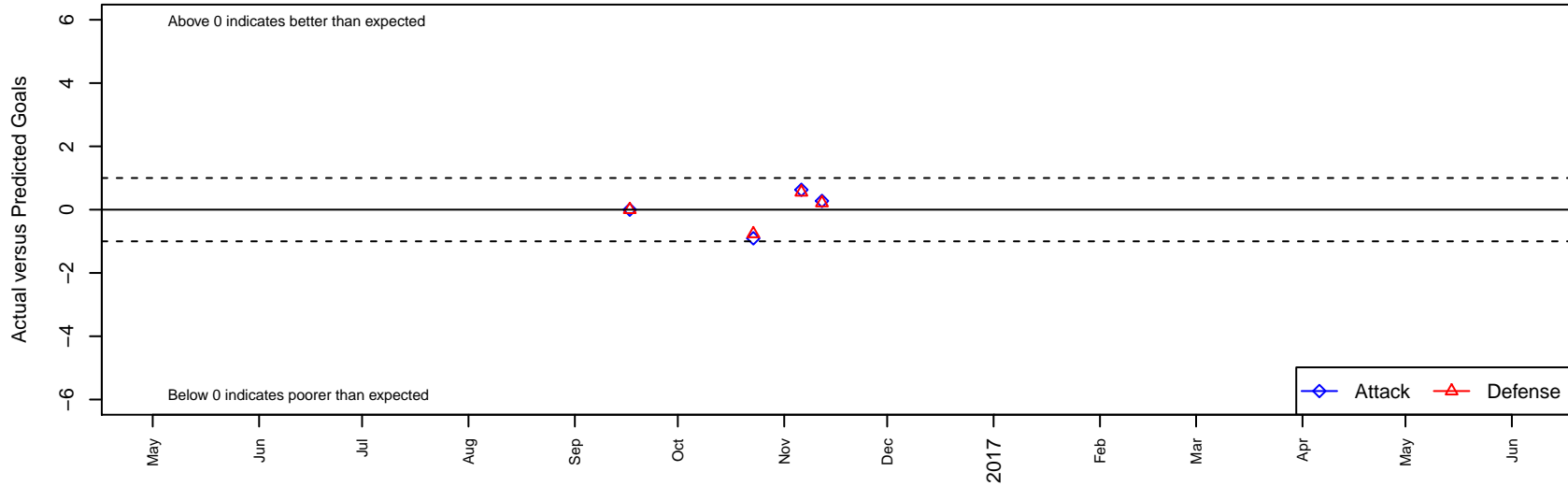


# Tottenham Hotspure East Bay Navy B03

, CAN  
 B03 total strength=1594  
 attack=11.35 defense=21.68  
 fall league = NorCal NPL 03 NPL 1 West

alt names used:  
 TOTTENHAM HOTSPUR EAST BAY SPURS 0  
 TOTTENHAM HOTSPUR EAST BAY SPURS 0  
 Venues played:  
 2016 NorCal NPL 03 NPL 1 West  
 2016 FWRL CAN At Large U14

**Tottenham Hotspure East Bay Navy B03**  
 Dots are actual minus expected GF (blue circles) and GA (red triangles).  
 Blue line is smoothed change in attack strength. Red is smoothed change in defense strength.



<b>date</b>	<b>home</b>		<b>away</b>		<b>venue</b>	<b>pred.home</b>	<b>pred.away</b>
016-11-12	Sunnyvale Alliance SC Elite Red B03	0	Tottenham Hotspure East Bay Navy B03	4	2016 FWRL CAN At Large U14	0.21	3.72
016-11-06	USA Stars B03	0	Tottenham Hotspure East Bay Navy B03	2	2016 FWRL CAN At Large U14	0.55	1.37
016-10-23	Tottenham Hotspure East Bay Navy B03	8	Davis Alliance Racing B03	1	2016 FWRL CAN At Large U14	8.91	0.24
016-09-17	Tottenham Hotspure East Bay Navy B03	5	Walnut Creek SC Blue B03	1	2016 NorCal NPL 03 NPL 1 West	5.00	1.00